

## CASCADEMIC Solutions Pvt. Ltd.

In the era of the smart and the convergence of technologies, we at CASCADEMIC extended and evolved our decades of embedded expertise from the SCADA to the M2M & Growing IoT space.

CASCADEMIC is a Fabless ODM Solution Provider in M2M and IoT. Specializing in Wireless Remote Monitoring, Sensors, and Controls & Industrial Automation.

In the process of continuous evolution and upgradation of technology, the process and processor SoC's are evolving and becoming more and more integrated. In addition, the complexities around RF, Ultra low power, Wireless protocols, and Embedded Java & Real time firmware applications built-on many such industrial embedded devices with long term reliability and availability requirements are increasing.

By addressing the above needs from the Concept to Manufacturing Vertical Integration, we act as an ODM partner for our Customer's Intelligent System Solution needs of:

- Wireless Smart Flow Meter
- OEM Thermal Printer Solution
- Wi-Fi RFID Access Control Solution
- Wireless Sensor Networks
- Smart Automation & Control
- GPS NAVI TRACK

## ADDRESS

CASCADEMIC Solutions Pvt. Ltd.  
1525/58, 2nd Floor, 28th Main,  
South End 'B' Cross, 9th Block,  
Jayanagar, Bangalore-560069  
INDIA  
Phone: 080 2658 3333

[www.cascademic.com](http://www.cascademic.com)

Email: [info@cascademic.com](mailto:info@cascademic.com)



## Pulse Metering Adapter with WiFi



Long lasting battery life

Easy configuration and installation

Wi-Fi, GPRS and MODBUS compatible

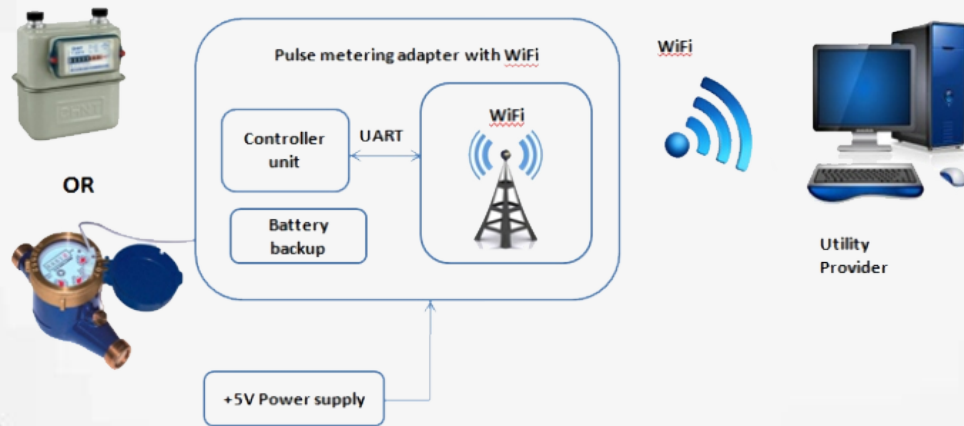
Secured communication using AES

## Product Description:

Wireless metering adapter replaces the traditional human reading method and send the meter reading and other parameters of the remote meters to the utility provider through wireless.

Wired to wireless converter are ideal for energy meter and other sensor application, where the data is read through Pulse and send to the cloud using WiFi.

## Block Diagram:



## Features:

|               |   |
|---------------|---|
| Input         | <ul style="list-style-type: none"><li>• Pulse input – Detect upto 30 pulse per secon</li></ul>  |
| Communication | <ul style="list-style-type: none"><li>• Supports WiFi client/AP/Router</li><li>• 2.4 GHz 802.11b/g/n compatible</li><li>• Support transparent transmission mode</li><li>• Data transmission trough tcp protocol</li></ul> |
| Encryption    | <ul style="list-style-type: none"><li>• Supports encryption type : Open, WEP, WPA.</li></ul>  |
| Range         | <ul style="list-style-type: none"><li>• 50 to 60 meters</li></ul>   |
| Memory        | <ul style="list-style-type: none"><li>• External flash memory upto 256 KB (extendible upto 8Mb).</li></ul>  |

## Application:

- Smart remote metering.
- Water Monitoring and Measurement.
- Gas Metering.
- Energy Metering.